

Installation-Profile connection



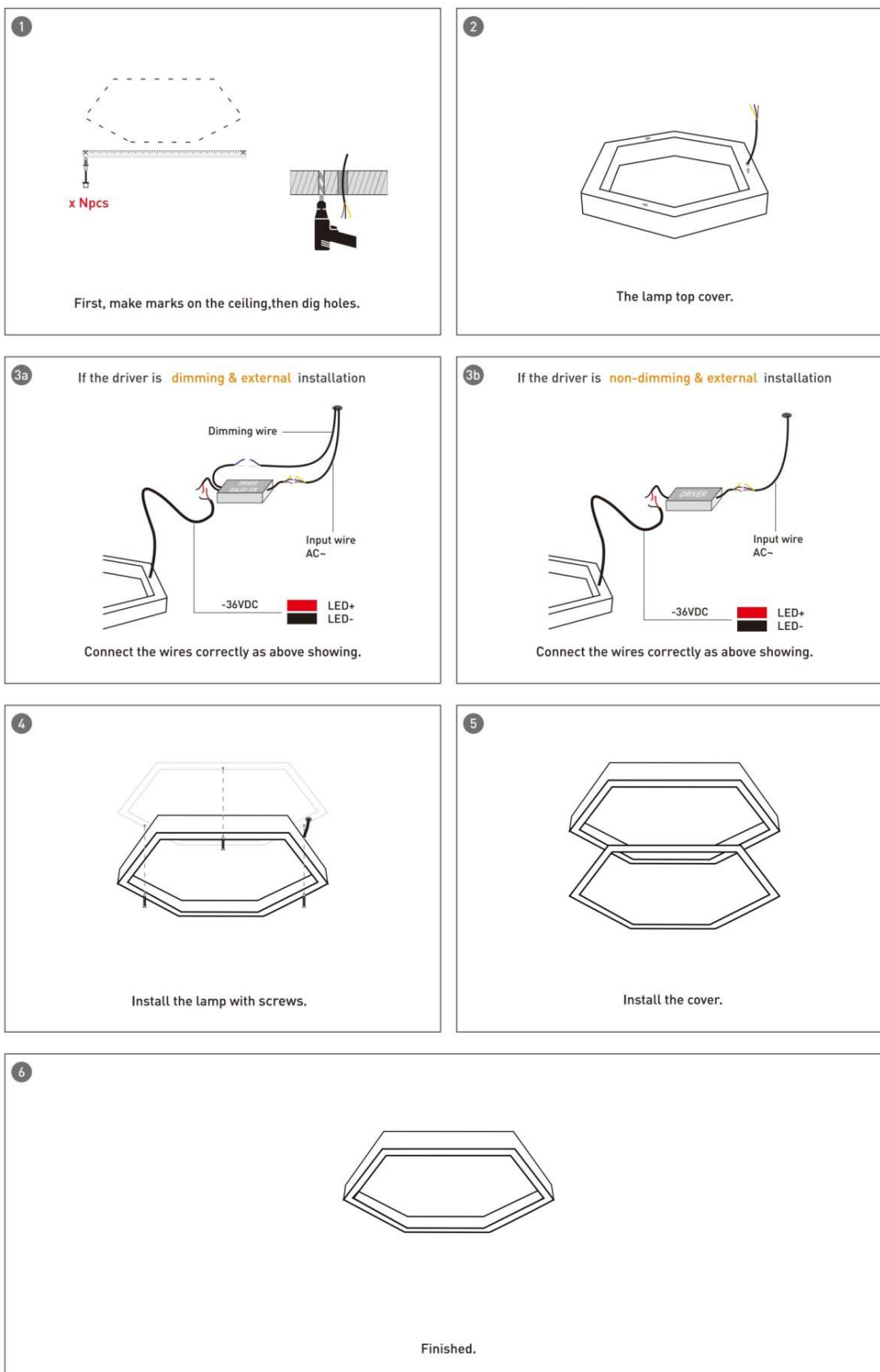
Installation-Cover



Installation-End cap



Installation-Screws ceiling



Installation-Pendant with ceiling box

1


x Npcs

First, make marks on the ceiling, then dig holes.

2


For Big box

x2pcs

Second, fixed the terminals of the pendant suit and box holder with screws

3


x Npcs

Install the terminals of the pendant suit.

4


Install the lamp as the picture shows.

5a

If the driver is dimming & external installation



Connect the wires correctly as above showing.

5b

If the driver is non-dimming & external installation



Connect the wires correctly as above showing.

6


x2pcs

Big box

Install the big box as above showing.

7


Finished

Installation-C Clip ceiling

1

First, make marks on the ceiling, then dig holes.

2

The lamp top cover.

3

Install the clip on ceiling.

4

Install the lamp as above showing.

5a

If the driver is **dimming & external** installation

Connect the wires correctly as above showing.

5b

If the driver is **non-dimming & external** installation

Connect the wires correctly as above showing.

6

Finished.